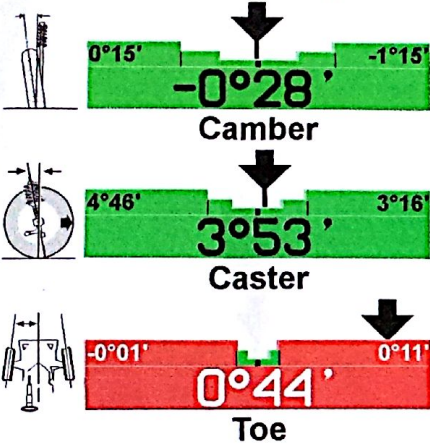


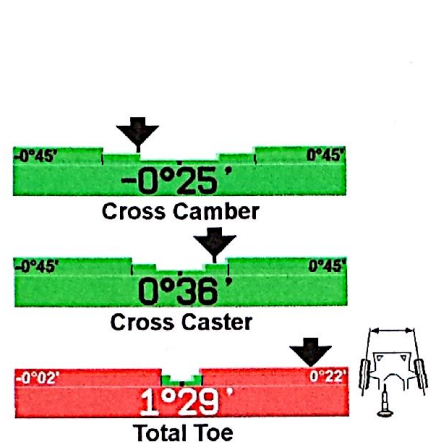
Work Order: R000025
 Last Name: SN06 KYR
 Registration: SN06 KYR
 Technician: MARCIN
 Odometer: 75503
 Date: 26.6.14 8:44

Land Rover : Discovery : 2005-09 (Series III) : with Dynamic Air Suspension : Right-hand Drive
 Before Measurements

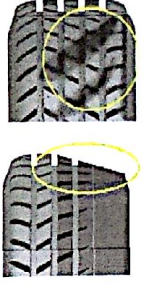
Left Front



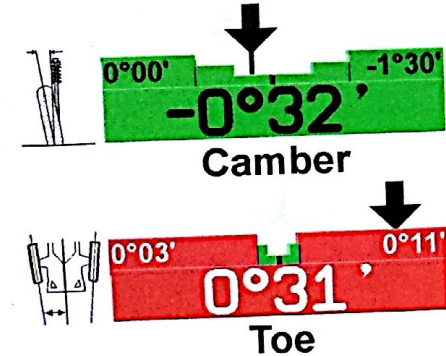
Right Front



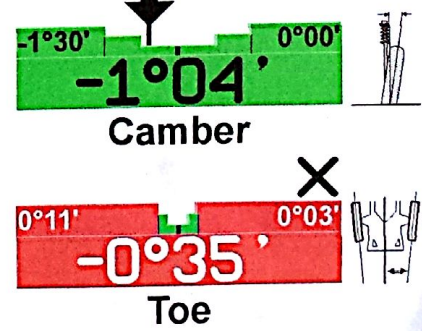
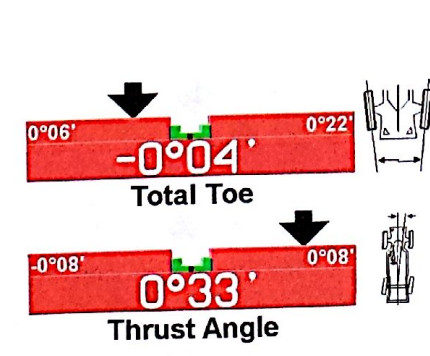
- Excessive Toe causes scuffing, shoulder wear and poor fuel economy.



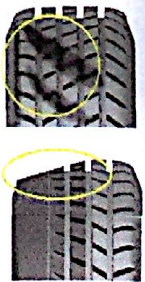
Left Rear



Right Rear



- Excessive Toe causes scuffing, shoulder wear and poor fuel economy.
- Excessive Thrust Angle could cause a crooked steering wheel.



This vehicle's Steering Angle Sensor may require calibration using an OEM scan tool after alignment.