

ALTOX WBUS-4 INSTALLATION

Tools needed:

Crimp tang

Scissors or hobby knife

Pliers

Phillips screwdriver

Long small screwdriver

Diagonal Cutter or similar

Items you need for install:

Red wire in Webasto pin 2, if not there can be bought <http://www.disco3.co.uk/shop/parts-accessories-c8.html>

50 cm of stiff steel wire (to pull the wire to inside of car)

Some 0.75 mm² wire (for connecting the FBH to the Altox)

Isolating tape

Double-side tape

Small piece of carpet 3 x 6 cm (can be done without, easier to get Altox in and out if needed)

In Altox box:

Altox Wbus-4 module with connector

2 T-Tap female/male insulated

3 insulated plugs male/female

1 Fuse box with 3 amp fuse

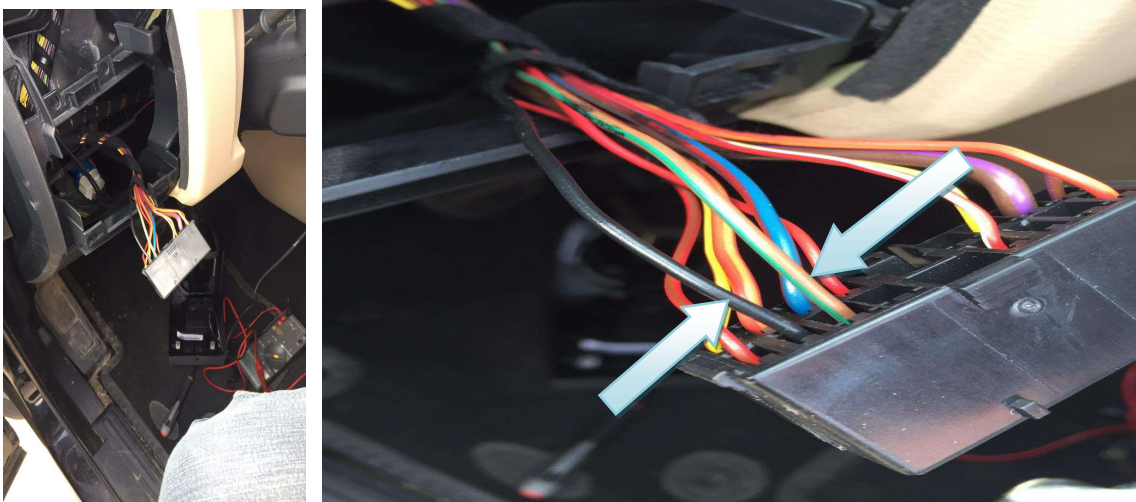
2 pieces of Velcro

Remember all pictures in the installation guide is from a Left Hand Drive

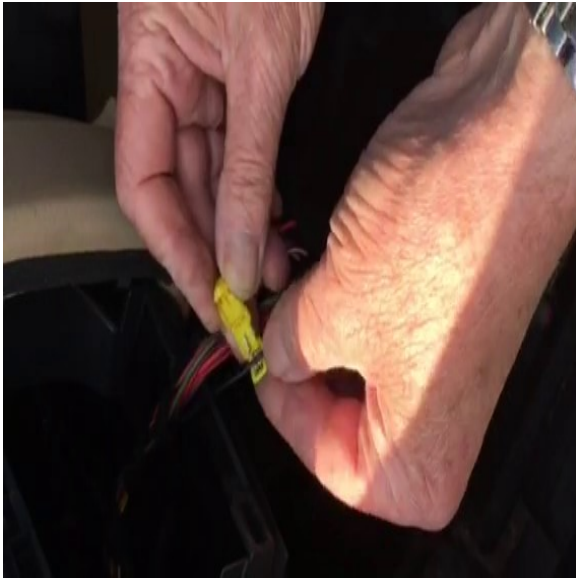
- disconnect battery
- Start taking it apart



- Unscrew 2 screws on panel under steering wheel, take panel off from top, don't lose splitters to connect again
- take the panel with light switch of, need to take it from bottom, cause of plastic hinges in top, disconnect it, so you can work with the wires

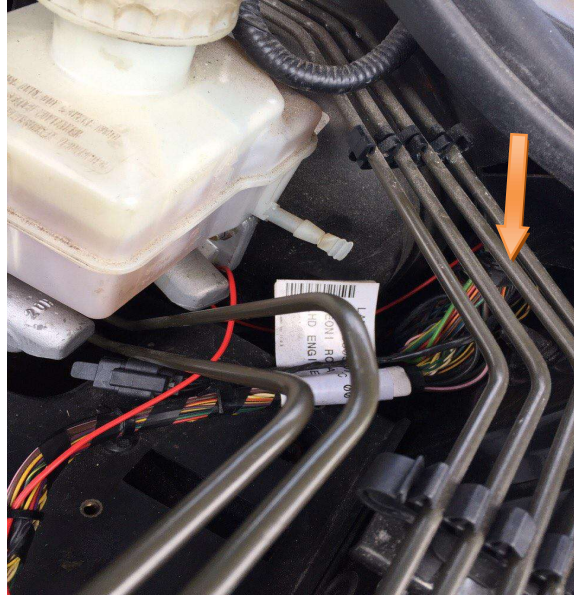
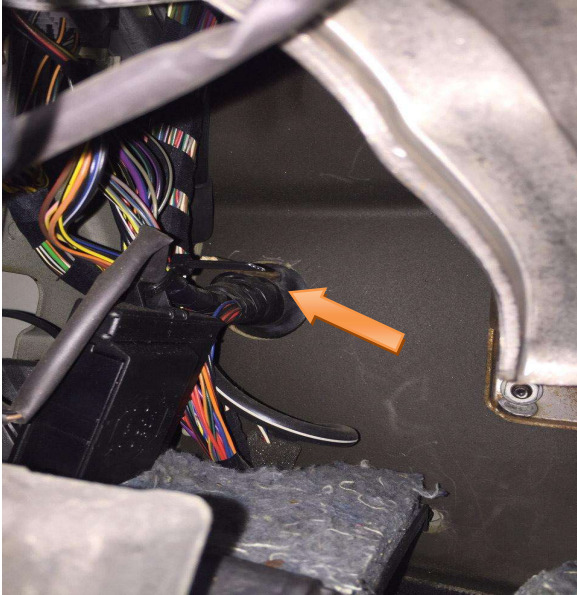


- we are working with the Black wire (ground) and Brown/Green wire (constant 12V) see arrow



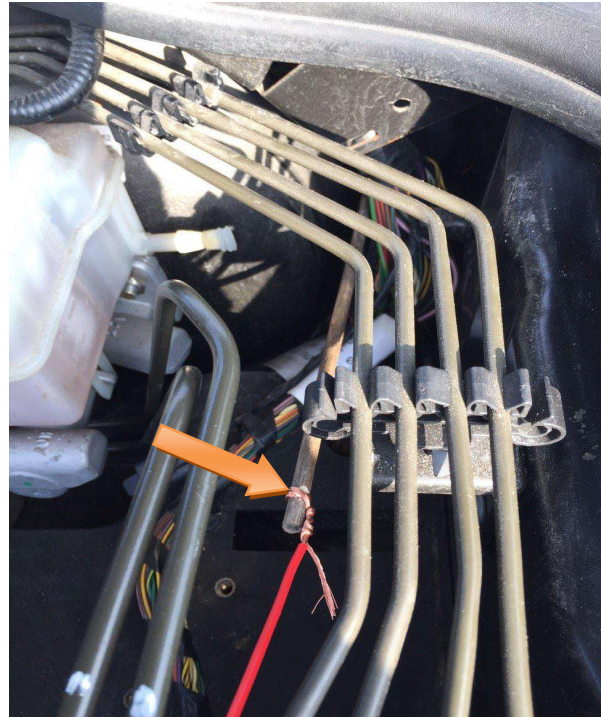
- squeeze the one T-Taps on the black wire and one on the brown/green wire
- You can see we have constant 12 V , just to show, you will not see anything cause your battery is disconnected

- You need to get the red wire to connect FBH into car



- go through where you see arrow, this is rubber, you can use the small long screwdriver to make a hole from outside
- When you have made a hole all the way through the rubber, remove screwdriver, and you can see where you went through in the rubber from outside

- stick the steel wire through the hole (I used a small wooden stick on pictures but steel wire is better)

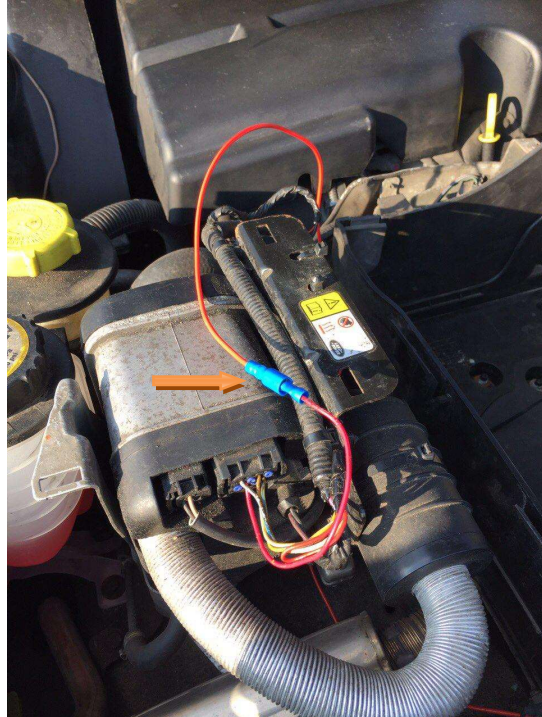
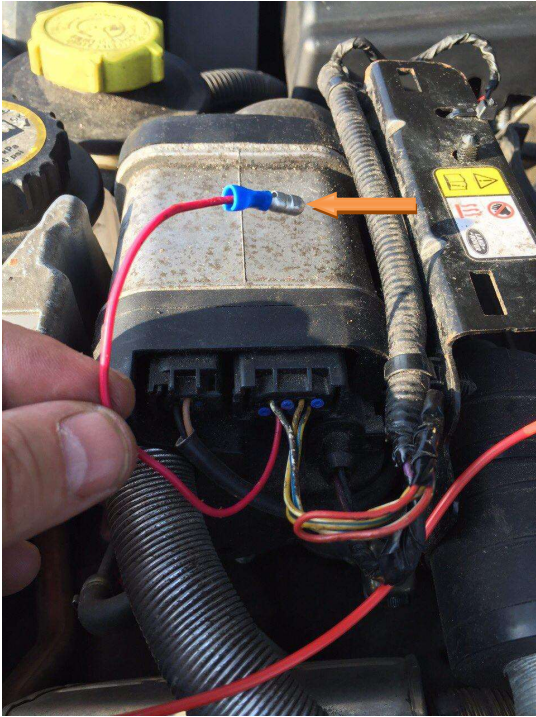


- Then you tie your 0,75 mm² wire on to the steel wire



- And pull it into the cabin

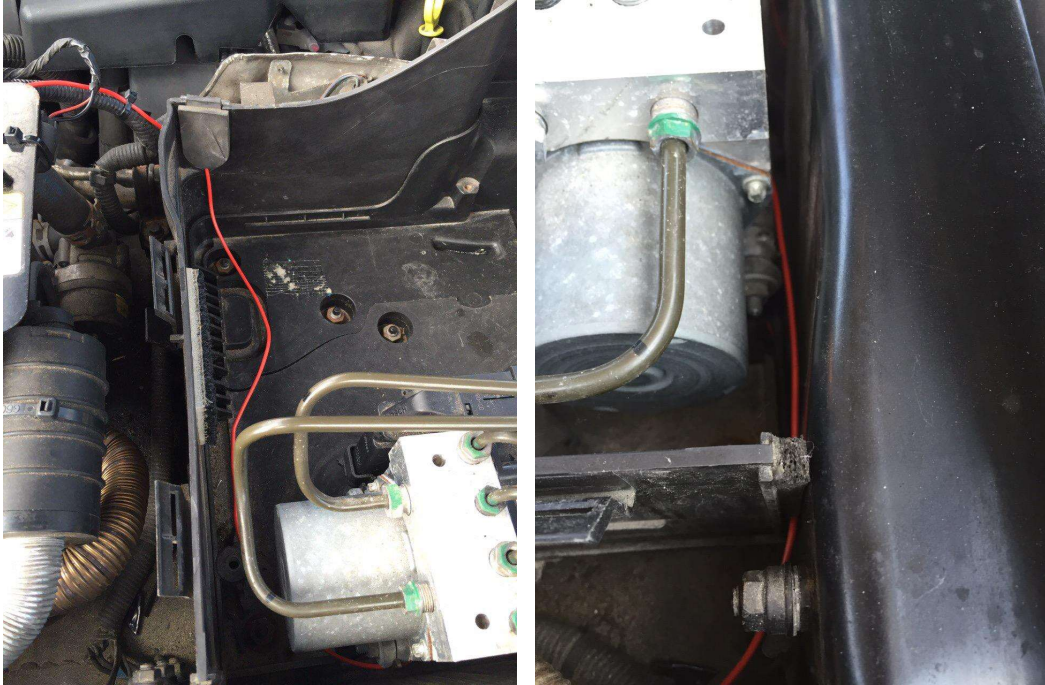
- Then connect the red wire to the FBH



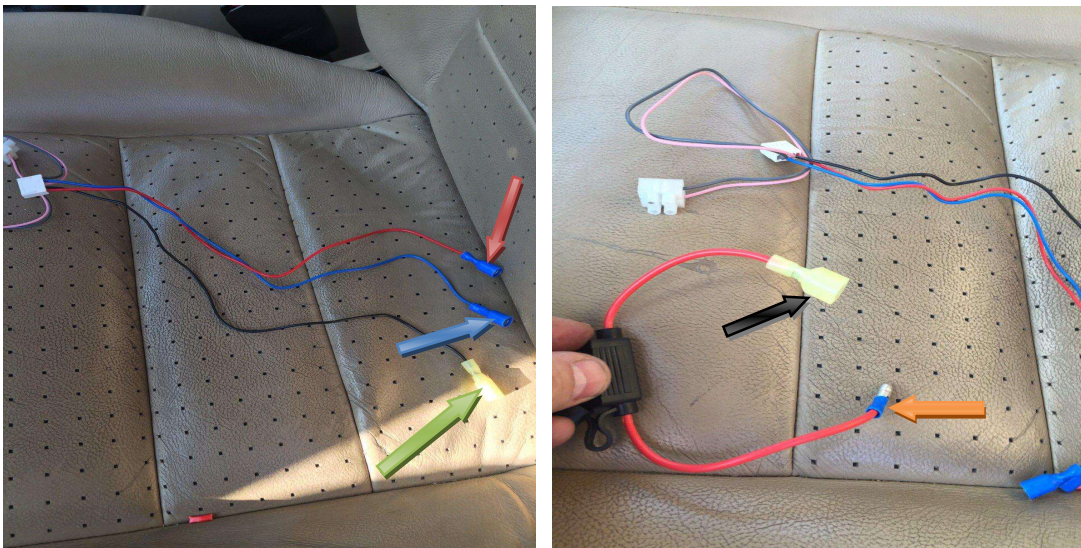
- you squeeze a male Plug on wire from FBH, and female on red wire that goes to cabin
- Put plugs together



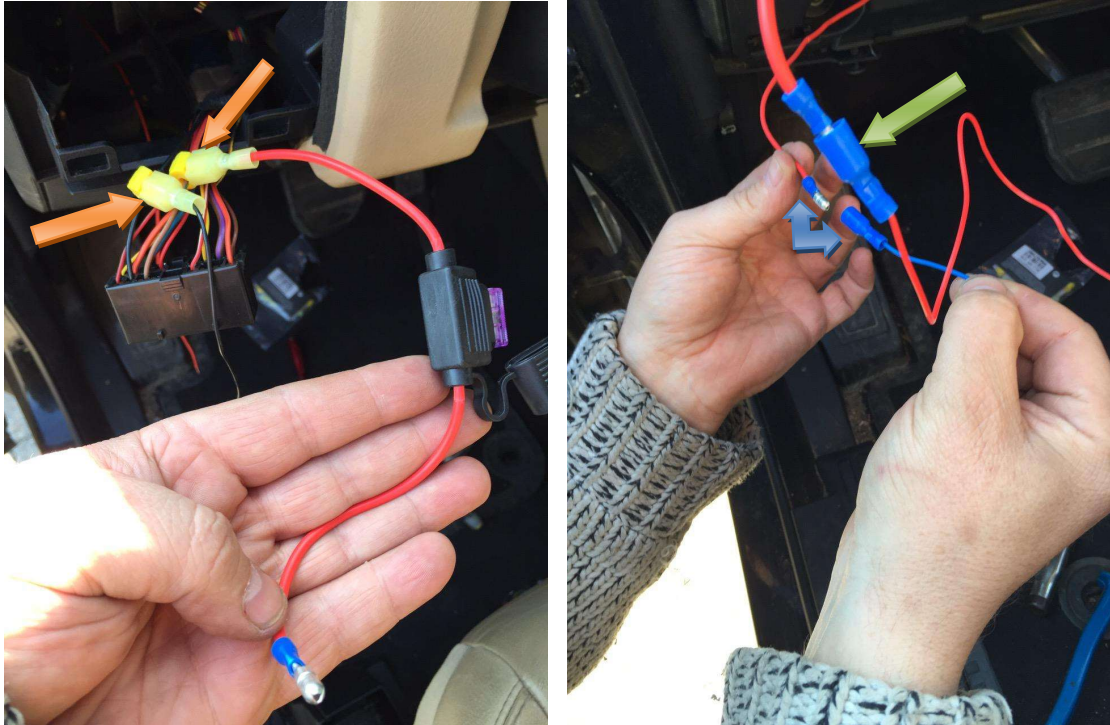
- use the isolate tape to attach it to the other wires, make sure wire runs on top, to keep it from the heat from FBH
- Remember to have enough wire to be able to drag it nicely in engine room, if you have a LHD you can see picture how to, if you own a RHD just go with other wires behind engine



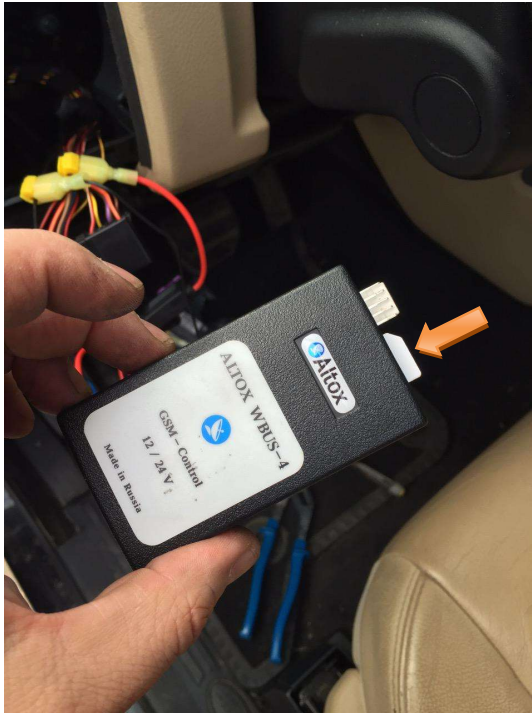
- go back into car to connect the Alttox module
- start by preparing the plugs and connectors for the Alttox
- The Grey and pink wire on Alttox connector are not in use for the Discovery 3



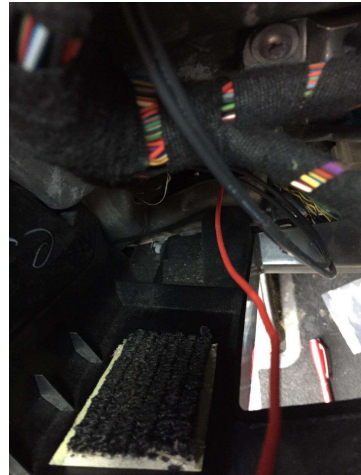
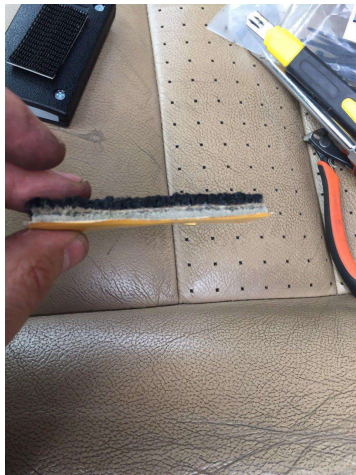
- Take the altox connector squeeze one female plug to red wire "12 V" (Red arrow) and one to the blue wire "WBUS" (Blue arrow)
- You squeeze the male connector for T-Tabs on the black wire "ground" (green arrow)
- Then you take the fuse and connect a male plug in one end (orange arrow), and a male T-Tabs in other end (Black arrow)



- Connect the Black T-Tap male to female T-Tap on black wire on light switch cable, be sure the connectors go straight in so you get contact (orange arrows)
- Connect the fuse box T-Taps male on to the female T-Taps on the brown/green wire on light switch cable, again be sure it goes straight in to connect (orange arrows)
- Connect the red wire with female Plug from Alttox connector to the male plug from fuse box (green arrow)
- Squeeze a male plug on the wire from FBH (blue arrow)
- Connect the blue wire with female plug from alttox connector to the FBH male plug (blue arrow)



- Put in your simcard to the Altox, remember to remove access code on sim before install
- Stick one piece of velcro on the Altox back side





- Connect the connector to the Altox
- Put a small piece of carpet on double sided tape, glue it inside behind the dashboard you see fit
- Now you can put the Altox on the carpet. If you don't have a piece of carpet just glue it in with double sided tape
- Connect cable to light switch and put light switch panel back, wait with the lower panel, just incase you need to get to Altox under setup
- Connect battery
- Now you just need to set up the Altox
- See manual for setup.
- If you want to set it up for Web application, see "Altox web app install.pdf"
- When all is done, put lower panel back, and you are all done+++++

This is an easy install, it will take less than an hour