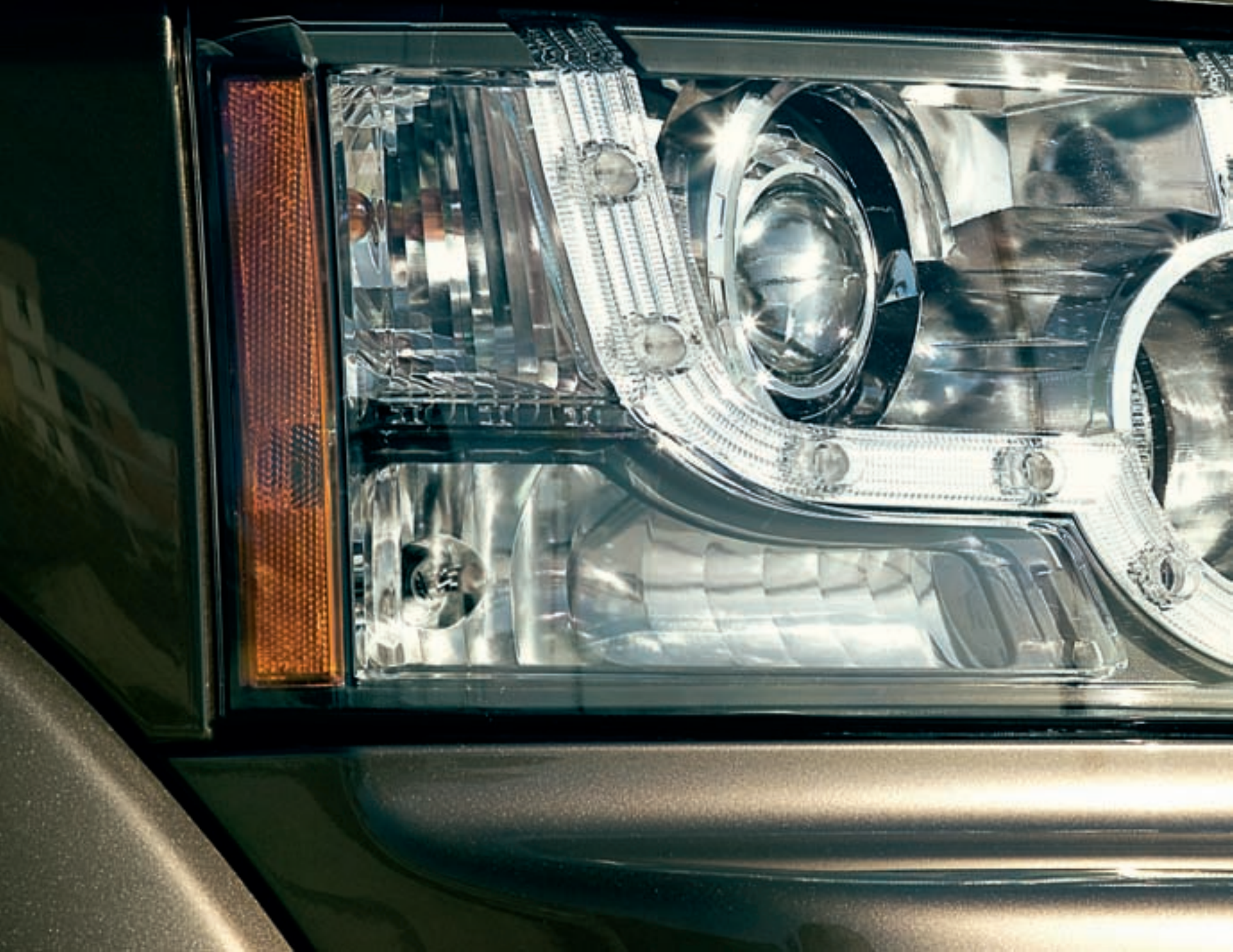


DISCOVERY 4



GO BEYOND





Introduction

New look, new style, new Discovery 4

PAGES
2-5

Tough luxury

An all-new interior that's more refined, more premium

PAGES
6-7

Interior

Stadium seating and versatile cabin design

PAGES
8-13

Driving technology

New engines, new dynamics

PAGES
14-15

Breadth of capability

All-road capability, Terrain Response® and tow assist

PAGES
16-23

Peace of mind

Smart technology, useful technology and safety

PAGES
24-27

Specification and choices

Accessories, exterior colours, interior colours and wheels

PAGES
28-33

Technical data

Engines, technical data, dimensions, capability and weights

PAGES
34-37

Sustainability

PAGES
38-39



New Discovery 4. Bold, flexible and more luxurious. Instantly recognisable as a Land Rover, it features a new progressive, more contemporary exterior. A fresh attitude that gives new Discovery 4 a more refined, more modern presence on-road. And off-road.







New Discovery 4 features striking new headlamp styling, incorporating the unique Land Rover 'night-time' signature, a new two bar lattice grille and a new re-profiled front bumper with improved aerodynamics. Also new are three exhilarating exterior body colours, Nara Bronze, Ipanema Sand and Bali Blue, which join the distinctive, new Discovery 4 line-up.

New Discovery 4. Always original with its distinctive profile, key design features become even more integrated and premium. There are body coloured painted door mirrors, as well as a new Oberon finish for door handles. And new jewel-like rear lamps, new front fenders and the option of new 19 inch or 20 inch lightweight alloy wheels.

Tough luxury. The sumptuous, more tactile all-new premium interior for new Discovery 4 provides increased levels of craftsmanship and comfort. Meticulous attention to design and detail, such as the seats, that is without compromise. Materials are more premium, creating a superior ambience of quality and prestige. Fine touches, such as double stitching on the facia, are straight forward expressions of the vehicle's prestige.

The Terrain Response® control is easier to reach in its new, more prominent position at the base of the centre console. Door casings have also been redesigned for added practicality. And then there are those small, practical details that just get better and better: stowage space around the centre console is extra generous; the useful door pockets are improved and, for HSE models, benefit from their own dedicated lighting. There is a new centre console with an integrated, flowing design. There is a new In-Car Entertainment system: a new, optional full-colour, Infotainment Touch-screen and new more comfortable, more supportive seats both front and rear. Ergonomics are improved too. Driver information is accessed more intuitively and is presented in a clearer, more immediate format. Menus and graphics are upgraded, while functionality is increased.







Monday: Airport



Tuesday: School bus



Wednesday: Band practice



Thursday: Garden centre



Friday: Night out at the theatre

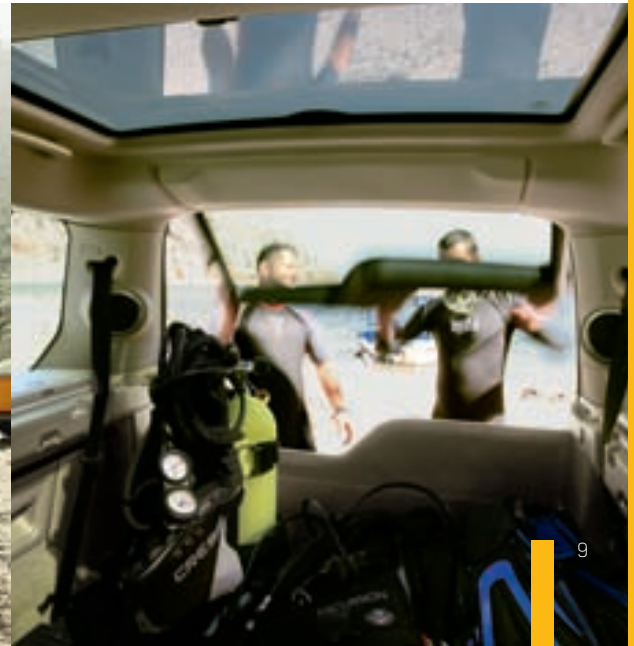


It's the weekend...

Proper grown-up seating. As many as seven adults can travel in complete comfort and enjoy a full-sized, forward facing seat, generous legroom and wide-opening doors for easy access. The flexible, versatile seating layout offers multiple configurations to suit almost every conceivable use.

Even the rear most passengers can enjoy spectacular views from the glass alpine roofs which feature as part of the optional sunroof. While the combined reflective properties of the glass panel and interior sunblinds keep everyone cool and the cabin light and airy.

Make light work of difficult loads with new Discovery 4's two-piece, asymmetric tailgate design. Both upper and lower tailgates are made from resilient lightweight aluminium. In fact, the lower tailgate is so strong that, when the vehicle is parked, it can support the weight of two adults and be used as a viewing platform. Alternatively, the lower section can be used as a seat with the upper section providing a canopy. When fully open, the tailgate gives impressive access to the rear of the vehicle and comes into its own when loading large, bulky or heavy objects. The asymmetric portion of the lower tailgate offers a reduced reach-in distance when open and a lower load height when closed.





Making the passenger experience sublime. Thanks to new Discovery 4's bold, innovative design and upright side profile, there is more head and shoulder room than in competitor vehicles. Stadium seating ensures that all occupants share clear views of the surrounding landscape. Further strides have also taken place with regards to refinement, including the reduction of noise intrusion and the inclusion of new, high-quality materials.

New Discovery 4 features the legendary Land Rover command driving position, which gives better visibility over the traffic ahead for spotting hazards and helps parking and off-road driving. The command driving position brings a sense of control and reduces stress and fatigue as all key controls are close to hand and information is easy to read.





Making the driving experience effortless. The new, full-colour Infotainment Touch-screen, standard on high line derivatives, is located at the top of the new centre console. This provides all audio and navigation controls and is easier to use and gives more intuitive access. It reduces the number of conventional controls required on the console and frees up space for an eye-catching analogue clock, which adds to the premium ambience of the interior. A choice of In-Car Entertainment options are available including **harman/kardon**[®], premium LOGIC7[®] system incorporating premium 'theatre-style' audio quality.

The centrepiece of driver information is the new instrument panel with its 5 inch Thin Film Transistor (TFT) display. It shows key vehicle information and can be personalised using a simple menu system controlled by the thumb controls on the steering wheel. Switches for other functions, including cruise control, remote audio and phone, are conveniently located below the thumb controls.

harman/kardon[®] and LOGIC7[®] are registered trademarks of Harman International Industries, Incorporated.



New levels of power, economy and refinement. A new engine for new Discovery 4, setting new standards for performance. The new LR-TDV6 3.0 Advanced Sequential Turbo Diesel Engine uses the latest materials and sequential turbochargers to optimise responsiveness by delivering increased torque at very low revs. This is one of the most technically advanced diesel engines in the world and uses unique, parallel sequential turbochargers for the first time in a V-engine. The high-technology 2.7 litre TDV6 Diesel provides smooth torque distribution, flexibility, refinement and economy thanks to the latest common rail technology and innovative materials.



THE NEW LR-TDV6 3.0 ADVANCED SEQUENTIAL TURBO DIESEL ENGINE uses a sequential mode boosting system to increase the air density entering the engine's cylinders, enabling a correspondingly greater amount of fuel to be injected for increased power output and economy. This is a two turbocharger, two-stage system, which makes the engine more responsive as well as delivering class-leading torque and power. The primary stage, variable nozzle turbine operates over the entire rev range. Unlike in most single boost systems, the primary stage provides maximum performance up to 2,500rpm. Above 2,500rpm the secondary stage, fixed geometry turbine switches into operation splitting the gas flow between the two turbochargers.

Engine upgrades benefit from the latest investment in e_TERRAIN TECHNOLOGIES, specifically to reduce CO₂ emissions and fuel consumption. An Intelligent Power Management System includes Smart Regenerative Charging so the battery is charged when it is most economical to do so. Idle speeds are reduced and a 'metering mode' added to the diesel fuel injection system, delivering fuel at the exact rate needed - no more; no less.



THE FUEL INJECTION SYSTEM on the new diesel engine achieves high standards of durability, combustion performance and refinement. The ultra-precise machining of high-pressure injectors ensures a fine-quality spray of fuel into the combustion chambers and optimises combustion conditions both at cruising speed and during acceleration. The engine uses a high-pressure, steel fuel rail. Fuel in the rail is detected by a high-pressure sensor which controls flow into the rail by adjusting an electromagnetic valve in the high-pressure fuel pumps' outlet.

INCREASED SERVICE INTERVALS AND REDUCED COST OF OWNERSHIP are the result of the very latest design, engineering and manufacturing techniques, as well as the use of technologically advanced materials and components. The new diesel engine offers optimum performance combined with premium refinement and significant reductions in Noise, Vibration and Harshness (NVH). All engines have been developed to cope with the specific requirements of a Land Rover product: strength and durability when operating in dusty environments, on steep inclines and wading through rivers.




A new, cutting edge development is the introduction of optional Tow Assist, a next-generation reversing aid that predicts the rearward trajectory of both vehicle and trailer. This helps the driver perform more accurate manoeuvres and is selected from the Touch-screen menu. Wide-view cameras on the vehicle give a clear field of vision; guidelines are superimposed over the resulting image to highlight the suggested reversing path for vehicle and trailer.



Other towing aids are Tow Hitch Assist and Trailer Stability Assist*. The latter detects potentially dangerous trailer oscillations by monitoring vehicle behaviour such as a slight swing in response to trailer movements. It can initiate engine torque reduction and intervenes using the brakes to bring vehicle and trailer back under control. Tow Hitch Assist helps hitching a trailer to the tow ball. Tow Assist and Tow Hitch Assist are features of the optional Surround Camera System and are operated via the Touch-screen in vehicles fitted with trailer electrics. Tow Stability Assist features on all derivatives.

*If towing for commercial gain, please refer to your dealership for information relating to digital tachograph installation.





Dynamic performance on-road. New Discovery 4 features advanced technology that helps keep the driver connected with the road and provides an enhanced, more engaging and entertaining drive. It makes getting behind the wheel and heading for the open road pure pleasure. Four-corner electronic air suspension* maintains a smooth, constant ride regardless of the distribution of passengers and size of load. Brakes are upgraded to handle the extra power and torque of the new engines.

New Discovery 4 also features Roll Stability Control, an advanced safety system which intervenes to help maintain stability. For the keener driver, new variable ratio steering features for greater manoeuvrability at low speed and improved driver confidence at higher speeds. Improvements to the suspension geometry include a new, stiffer front anti-roll bar. The result is outstanding, car-like handling that does not compromise extreme axle articulation and, consequently, the off-road ability of the vehicle.

*Fitted to many models as standard, please ask your Land Rover dealership for more information.

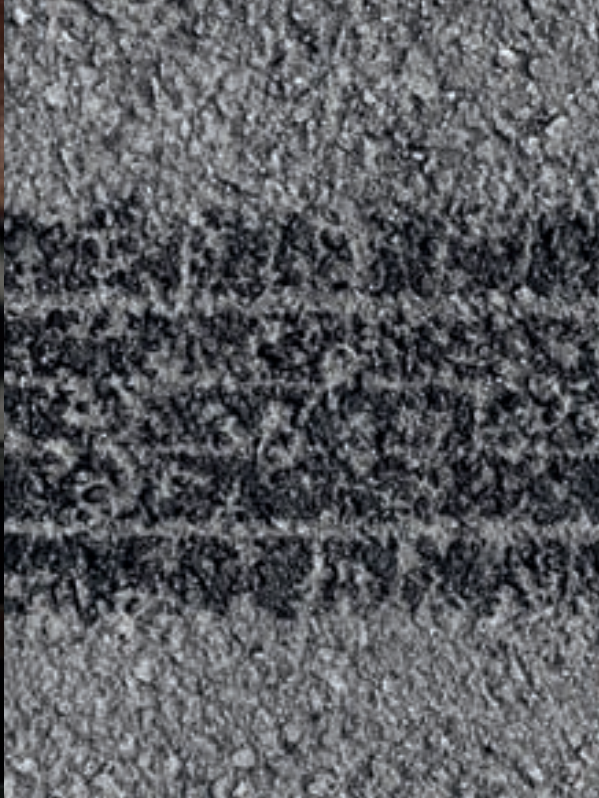




Short front and rear overhangs. Exceptional ground clearance. Increased performance and torque from the new LR-TDV6 3.0 Advanced Sequential Turbo Diesel engine makes major contributions to new Discovery 4's superior off-road capability. And they help enable maximum manoeuvrability over some of the most difficult terrains. Long-travel, all-independent suspension allows extreme wheel articulation. Ruts and rocks, for example, are conquered with ease.

Optional four-corner cross-linked air suspension provides class-leading car-like ride and handling, as well as a constant, level ride height, irrespective of the number of passengers or load distribution. Ride height can also be raised by up to 125mm to clear tricky obstacles, or lowered by 50mm for easy access and loading.





Whatever the surface, new Discovery 4 takes it on with confidence. The Terrain Response® dial, standard on derivatives with air suspension, gives access to over 60 years of Land Rover 4x4 expertise and state-of-the-art dynamic technology. Enhanced with Land Rover's latest e_TERRAIN TECHNOLOGIES, specifically to reduce CO₂ emissions, Discovery 4's Intelligent Power Management System, shared with the Range Rover and Range Rover Sport, complements all Terrain performance with energy saving technology.



Cruising on tarmac, driving over grass, gravel or snow, taking on mud and ruts, crossing sand and crawling over rocks, Terrain Response® is your own off-road driving expert. Simply turn the new, more conveniently positioned dial and new Discovery 4's engine, transmission, suspension, throttle and traction settings reconfigure for optimum driveability in all conditions. New Discovery 4 takes this technology a further step forward and includes new Sand Launch Control and enhanced traction during Rock Crawl Pre-charge which is a function that applies a small amount of brake pressure to each brake calliper during low speeds to provide even more control during very low speed driving. The new Sand Launch Control system helps prevent the wheels spinning when moving off from a standstill and the vehicle 'digging in'. Once the vehicle reaches the appropriate speed the slip threshold is returned to its normal state.



AUTOMATIC HEADLAMPS WITH HIGH BEAM ASSIST* detect vehicle headlamps/tail lamps and dip the high beam until the light source is out of range. The system is able to distinguish between automotive and non-automotive light sources.



ADAPTIVE FRONT LIGHTING*. For more relaxed night-time driving, Adaptive Lighting varies the light cast ahead of the vehicle so that the beams follow the curve of the road.



DYNAMICS AND BRAKES. Upgraded suspension geometry, including a new, stiffer front anti-roll bar, gives increased driver-focus and improves on-road dynamics without compromising off-road ability. The result is outstanding, car-like handling that does not compromise extreme axle articulation and, consequently, the off-road ability of the vehicle. Brakes are enhanced for improved feel and performance on the new engines with larger diameter discs. Added confidence and capability from New Discovery 4.



STEERING WHEEL CONTROLS. New steering wheel design with revised switch layout for driver information and remote audio controls. Cruise control, telephone and heated steering wheel controls are optional dependant on the vehicle derivative.



THE AWARD WINNING TERRAIN RESPONSE SYSTEM optimises the vehicle set-up for virtually all on-road or off-road driving situations, with five different settings to suit different terrains such as grass/gravel/snow, sand, mud and ruts and rock crawl.

GRADIENT RELEASE CONTROL. New, patented Land Rover system works with Hill Descent Control, across terrains such as rock, gravel and sand, for more controlled, confident descents. Works in reverse and first gear.



AIR SUSPENSION. Four-corner independent Air Suspension with variable ride height and electronic cross-linking for a constant level ride height irrespective of load. Ride height can be raised up to 125mm to clear obstacles or lowered by 50mm for easy access and loading.

* Features only available with Bi-Xenon headlamps



TRAILER STABILITY ASSIST. A new system helps make towing safer by detecting trailer oscillations and employing selective braking to correct potentially dangerous situations.

TOW ASSIST. A feature of the Surround Camera System. This innovative functionality has the capability to predict the direction of a trailer when reversing. An on-screen information prompt appears and confirms when a trailer is attached and guides the driver. An additional feature due to the mounting location of the rear view camera is Tow Hitch Assist that helps the driver to precisely couple the tow bar with a trailer hitch.



ELECTRIC PARKING BRAKE (EPB). A switch next to the gear selector to electrically apply and release the parking brakes on the rear wheels. A simple pull of the lever applies the brake manually and a press releases it. The parking brake will also release automatically upon drive away.



PUSH BUTTON START. Once the vehicle has been accessed using the remote transmitter, the device may be stored in a pocket or bag to allow starting without remote transmitter or key being docked. The optional **Keyless Entry** system provides even greater convenience. When within close proximity of the vehicle along with the remote Smart key, simply open the door, get in and push the Start button.



PARKING AID – REAR VIEW CAMERA. Camera provides rearward view from the new, full-colour Infotainment Touch-screen. Works in conjunction with rear parking aid. **Surround Camera System** (Optional) comprises 5 digital cameras to provide near 360 degree view surrounding vehicle to aid low speed manoeuvring via new, full-colour Infotainment Touch-screen. Can be customised to provide a single camera view or multiple images. Functions include: Parking Aid – Rear View Camera, All Round Vision, Junction View. Also includes Tow Assist and Tow Hitch Assist.



NEW INSTRUMENT PANEL with 5 inch (12.7cm) TFT display for trip information, primary vehicle information and warnings.



NEW, FULL-COLOUR INFOTAINMENT TOUCH-SCREEN. Incorporates full control and functionality over integrated systems such as navigation, audio, entertainment systems, camera systems, 4x4 information and vehicle settings.



DAB RADIO (Digital Audio Broadcast) offers a broader choice of content with digital sound quality. Available in selected markets.



PORTABLE AUDIO INTERFACE. An innovative and convenient way to play portable music, including MP3 player, USB, iPod through **harman/kardon®** which works through high line and premium systems. Music folders, files and tracks are displayed on the new, full-colour Infotainment Touch-screen. Please note: No Cost Option iPod Connectivity Lead is required to connect iPod to system.

iPod is a trademark of Apple Inc., registered in the U.S. and other countries.



REAR SEAT ENTERTAINMENT. Rear passengers can watch DVDs individually or play their own portable games console through the optional twin-screen entertainment system, playing the sound through individual headphones or from the optional **harman/kardon®** premium LOGIC7® system incorporating premium 'theatre-style' audio quality.



REMOTE PARK HEAT (Optional, LR-TDV6 3.0 Advanced Sequential Turbo Diesel engine only) pre-heats engine and channels residual heat into cabin for added comfort at journey start. Programmable via Infotainment Touch-screen or activated by remote control.



ELECTRICALLY ADJUSTABLE SEAT BOLSTERS with Premium Leather on HSE derivatives. Provide the driver with added comfort and support. All front seats benefit from new, more supportive, cushion design.



HARD DISC DRIVE NAVIGATION (HDD). Increased access speed, new graphics and display. HDD stores more data and can be upgraded via a Land Rover dealership download.



Key to new Discovery 4's strength, safety and outstanding on-road and off-road dynamics is the Integrated Body-frame™. A Land Rover patented technology, it delivers more than the comfort, refinement and on-road attributes of a monocoque design. It sets new standards for off-road performance too. Other features include Anti-lock Braking System (ABS), Emergency Brake Assist (EBA) which supplies extra brake pressure in an emergency, and Electronic Traction Control (ETC) which helps maintain optimum grip. There is also the option of Tyre Pressure Monitoring System (TPMS), designed to warn you of low tyre pressure. Dynamic Stability Control (DSC) and Roll Stability Control work with the braking system and are designed to correct cornering over or understeer and to help maintain stability at all times. Up to eight airbags are fitted: the front seats have both front and side airbags with each seat row having its own curtain airbags. For a better view ahead on bends and a more effortless night-time drive, new Discovery 4's optional Adaptive Front Lighting varies the headlamp light cast, ensuring the beams follow the curve of the road. Optional Automatic High Beam Assist detects oncoming or followed vehicles to switch between high and dipped beam.



Because every owner enjoys his or her own unique lifestyle and pursuits, there is a range of specialised items that bring even more style and capability to new Discovery 4. Importantly, most accessories can be added at any stage during your vehicle's life and not just when it's new. Please refer to the main accessories brochure or speak to your Land Rover dealership for more details.

Side Steps improve access in both rural and urban environments. Side Runners and Mudflaps help protect the vehicle's body from stone chips, scuffs and scrapes whether you're in the countryside, the beach or in the car park. Mirror Caps add a touch of style and individuality to new Discovery 4's bold, new look. Front and Rear Lamp Guards keep headlamp clusters and lights protected from minor knocks and bumps. A Loadspace Protector will help keep that all-new interior looking as good as new. A Cargo Barrier retains luggage in the rear loadspace and a Cargo Divider separates pets from cargo.



EXTERIOR COLOURS



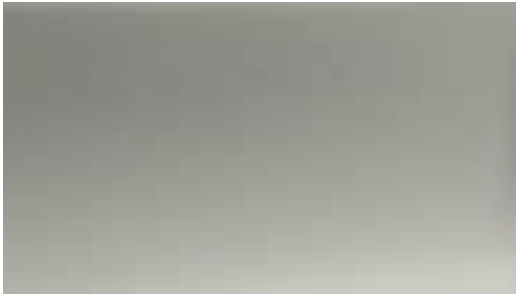
ALASKA WHITE - SOLID



BALI BLUE - METALLIC



BOURNVILLE - METALLIC



IPANEMA SAND - METALLIC



IZMIR BLUE - METALLIC



LUGANO TEAL - METALLIC



ZERMATT SILVER - METALLIC



MARMARIS TEAL - METALLIC*

*Marmaris Teal replaces Lugano Teal from January 2010





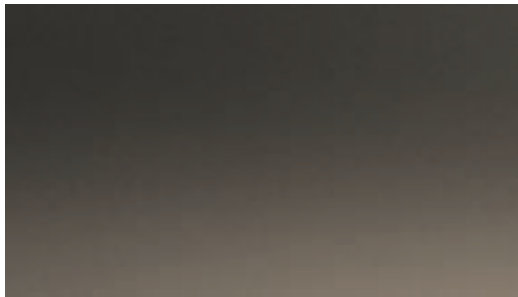
BUCKINGHAM BLUE - METALLIC



GALWAY GREEN - METALLIC



SANTORINI BLACK - METALLIC



NARA BRONZE - METALLIC



RIMINI RED - METALLIC



STORNOWAY GREY - METALLIC

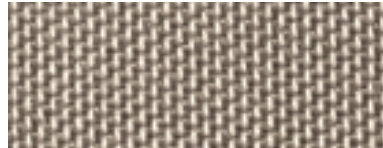
Thirteen eye-catching exterior colours including new Nara Bronze, Ipanema Sand and Bali Blue. Choose from finishes featuring shimmering chrome particles, deep rich metallics, or bold solid colour.

TO VIEW YOUR NEW DISCOVERY 4 IN A CHOICE OF EXTERIOR COLOURS AND INTERIOR FINISHES GO TO WWW.LANDROVER.CO.UK

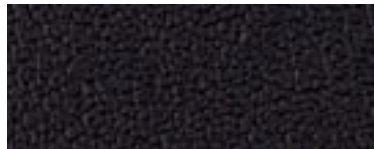
INTERIOR CHOICES



ALMOND LEATHER



ALMOND CLOTH



EBONY LEATHER



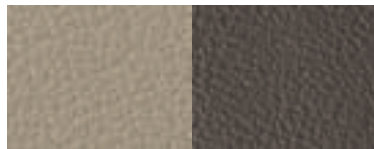
EBONY CLOTH



ALMOND PREMIUM LEATHER*
Premium leather ruched-style seat



EBONY PREMIUM LEATHER*



ALMOND/ARABICA

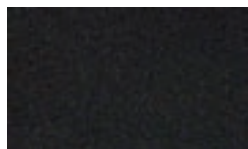


ALMOND/NUTMEG

*Electrically Adjustable Seat Bolsters standard
Almond interior is complemented by a choice of Nutmeg or Arabica to the top of the fascia and door casings and Nutmeg carpets.

INTERIOR FINISH

Choice of interior finishes applied to the centre of the fascia and upper door casings.



METEOR METALLIC FINISH



STRAIGHT GRAIN WALNUT



GRAND BLACK LACQUER

Nothing brings an extra feeling of prestige to the interior of Discovery 4 as much as opting for leather or premium leather. Two interiors, both bringing their own special personality; and they are Almond leather, complemented by a choice of Nutmeg (mid-tone) or Arabica (dark tone) and Ebony leather. The interior can be further enhanced with two real wood veneer finishes, Grand Black Lacquer and Straight Grain Walnut, which are applied to centre console and door panels (standard on HSE models). Cloth seats are also available. To help your exterior colour choice co-ordinate with new Discovery 4's interior trims, we recommend a number of combinations.

COLOURWAY	EBONY	ALMOND/ARABICA	ALMOND/NUTMEG
SEAT COLOUR	Ebony	Almond	Almond
CARPET	Ebony	Nutmeg	Nutmeg
FACIA TOP	Ebony	Arabica	Nutmeg
DOOR UPPER TRIM	Ebony	Almond*	Almond
DOOR INSERTS	Ebony	Almond	Almond

*For Leather and Premium Leather seats the Door Upper Trim will be Arabica

EXTERIOR COLOURS

Alaska White	R	□	□
Bali Blue	■	–	–
Bournville	R	■	R
Buckingham Blue	R	–	□
Galway Green	□	R	■
Ipanema Sand	R	■	■
Izmir Blue	■	–	□
Lugano Teal	R	□	R
Marmaris Teal*	R	□	R
Nara Bronze	□	■	■
Rimini Red	■	□	R
Santorini Black	■	□	□
Stornoway Grey	■	□	□
Zermatt Silver	■	R	□

*Marmaris Teal available from January 2010

■ Designer's Choice R Recommended □ Combination is available – Combination is not available

A set of gleaming alloy wheels. Nothing highlights the character of a vehicle quite as effectively. An individual design is featured for each new Discovery 4 model derivative, with an optional second style choice also available for those who like to add a touch of personalisation.



18 INCH 5-SPOKE ALLOY WHEELS
Tyre Specification: 255/60AT



19 INCH 7-SPOKE ALLOY WHEELS
Tyre Specification: 255/55AT



19 INCH 7-SPLIT SPOKE ALLOY WHEELS
Tyre Specification: 255/55AT



20 INCH 10-SPLIT SPOKE ALLOY WHEELS
Tyre Specification: 255/50AT

WHEELS AND TYRES

	2.7 TDV6 GS	3.0 TDV6 GS	3.0 TDV6 XS	3.0 TDV6 HSE
18 inch 5-Spoke Alloy Wheels - 255/60 AT	■	-	-	-
19 inch 7-Spoke Alloy Wheels - 255/55 AT	□	■	■	-
19 inch 7-Split Spoke Alloy Wheels - 255/55 AT	-	-	-	■
20 inch 10-Split Spoke Alloy Wheels - 255/50 AT	□	□	□	□
Full size Alloy Wheel Spare	□	□	□	□
Tyre Pressure Monitoring System (TPMS)	□	□	□	□

■ Standard □ Option - Not available

Please note: When choosing vehicles fitted with specific wheel and tyre combinations or optional wheels and tyres, your intended use of the vehicle should be considered. Wheels with larger diameters and lower profile tyres may offer certain styling or driving benefits, but may be more vulnerable to damage, please discuss your requirements with a dealership when selecting your vehicle and specification.

TECHNICAL DATA

ENGINE, TRANSMISSION AND SUSPENSION

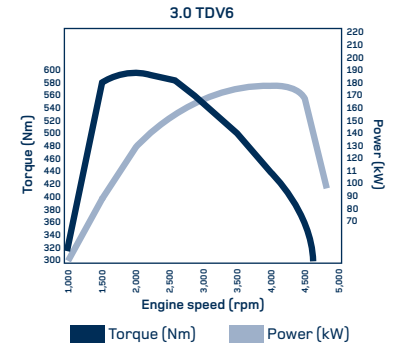
	2.7 TDV6 GS	3.0 TDV6 GS	3.0 TDV6 XS	3.0 TDV6 HSE
Six-speed manual transmission	■	–	–	–
Six-speed adaptive automatic transmission	□	■	■	■
Diesel Particulate Filter (DPF)*	□	□	□	□
Four-corner air suspension with Terrain Response®	■	■	■	■
Active rear locking differential	□	□	□	□

■ Standard □ Option – Not available

*LR-TDV6 3.0 Advanced Sequential Turbo Diesel engine EU5 compliant when fitted with a Diesel Particulate Filter (DPF)

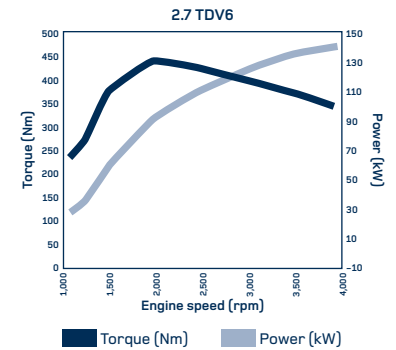
TRANSMISSION

	2.7 TDV6 Manual	2.7 TDV6 Auto	3.0 TDV6 Auto
Transmission type	ZF S6-53	ZF HP26	ZF HP28
Gear Ratios (High range)			
6th	0.83	0.69	0.69
5th	1.0	0.86	0.86
4th	1.26	1.14	1.14
3rd	1.78	1.52	1.52
2nd	2.80	2.34	2.34
1st	5.08	4.17	4.17
Reverse	4.72	3.40	3.40
Final drive ratio	3.07	3.54	3.54
Transfer box ratio			
High	1:1	1:1	1:1
Low	2.93:1	2.93:1	2.93:1



Max torque (Nm)
600Nm/2,000rpm

Max Power (kW)
180kW/4,000rpm



Max torque (Nm)
440Nm/1,900rpm

Max Power (kW)
140kW/4,000rpm

MAX SPEED IN GEARS

(High Range) mph (km/h) - Autos in 'D', with no CommandShift® or Sport selected			
	2.7 TDV6 Manual	2.7 TDV6 Auto	3.0 TDV6 Auto
1st	26.54 (42.71)	22.99 (36.99)	19 (30)
2nd	48.14 (77.46)	41.76 (67.19)	39 (63)
3rd	75.6 (121.64)	65.57 (105.5)	63 (101)
4th	106.99 (172.15)	92.74 (149.21)	85 (136)
5th	112 (180)	112 (180)	112 (180)
6th	112 (180)	112 (180)	112 (180)
(Low Range) - Autos in 'D', with no CommandShift® or Sport selected			
1st	9.06 (14.58)	7.85 (12.63)	6 (10)
2nd	16.42 (26.42)	14.24 (22.92)	14 (22)
3rd	25.82 (41.55)	22.36 (35.98)	21 (34)
4th	36.53 (58.78)	31.64 (50.91)	29 (46)
5th	46 (74.02)	39.88 (64.17)	39 (62)
6th	55.02 (88.52)	57.8 (93)	55 (88)
Cd (drag co-efficient)	0.41 (0.40 on 235/70R17)		

BRAKES

Description	2.7 TDV6	3.0 TDV6
Front size mm	317 (12.48)	360 (14.173)
Type	Ventilated disc	Ventilated disc
Rear size mm	325 (12.795)	350 (13.779)
Type	Ventilated disc	Ventilated disc
Parking	Duo Servo	Duo Servo

SAFETY & SECURITY

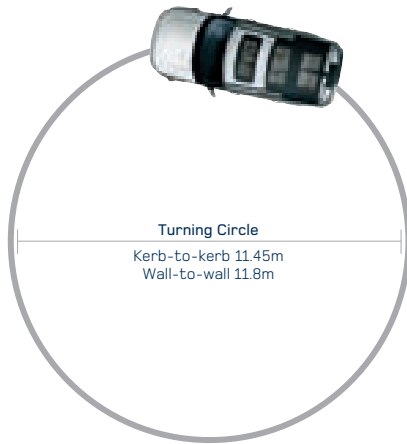
	2.7 TDV6 GS	3.0 TDV6 GS	3.0 TDV6 XS	TDV6 3.0 HSE
Roll Stability Control (RSC)	■	■	■	■
Airbags, row one driver and passenger front	■	■	■	■
Airbags, row one driver and passenger side	■	■	■	■
Airbags, side and head curtain (1st, 2nd & 3rd row*)	■	■	■	■
Central high mounted stop lamp	■	■	■	■
Dynamic Stability Control (DSC)	■	■	■	■
Electric Parking Brake (EPB)	■	■	■	■
Electronic Brake Assist (EBA)	■	■	■	■
Four channel all terrain ABS (Anti-lock Braking System) with all round ventilated disc brakes	■	■	■	■

■ Standard □ Option – Not available *3rd row only with 7 seats fitted

STEERING

	Description	All Derivatives
Type		Assisted rack and pinion
Steering wheel: height adjustment	standard	Turns lock to lock
Turning circle	Kerb to kerb Wall to wall	3.32 11.45m 11.8m

DIMENSIONS & CAPABILITY



Obstacle Clearance
Ground clearance up to 310mm (12.20 in.)
(air suspension)
Standard ride height 185mm (7.28 in.)



Wading Depth
Maximum wading depth 700mm (27.56 in.) (air suspension)
Normal wading depth 600mm (23.62 in.)



Off-road Geometry	A	B	C
Approach Angle	36.2°	Ramp Break Over Angle	27.3°
Off-road ride height (air suspension)		Departure Angle	29.6°



Maximum load space – seats folded

Interior
Head room – mm (inch)
1st row 1,020 (40.2) (1,027 (40.4) with sunroof)
2nd row 1,043 (41.1) (1,076 (42.4) with sunroof)
3rd row 983 (38.7) (1,018 (40.1) with sunroof)
Leg room – mm (inch)
1st row 1,078 (42.4)
2nd row 955 (37.6)
3rd row 923 (36.3)
Shoulder room – mm (inch)
1st row 1,503 (59.2)
2nd row 1,499 (59)
3rd row 1,087 (42.8)



Maximum load space behind row 2 – seats up

Luggage Capacity
Load space length behind: – mm (inch)
1st row 1,950 (76.8) 7 seat (1,831 (72.1) 5 seat)
2nd row 1,124 (44.3) 7 seat (1,108 (43.6) 5 seat)
3rd row 338 (13.3) 7 seat
Width – mm (inch)
1,235 (48.6) (1,146 (45.1) between wheel arches)
Height – mm (inch)
1,027 (40.4) (1,058 (41.7) with sunroof)
Load space volume behind: – litres (cu. feet)
1st row 2,558 (90.3) 7 seat (2,476 (87.4) 5 seat)
2nd row 1,192 (42.1) 7 seat (1,260 (44.5) 5 seat)
3rd row 280 (9.9) 7 seat

WEIGHTS & PERFORMANCE

Width 2,022mm [79.6 in.] mirrors folded
2,176mm [85.7 in.] mirrors out



Rear wheel track 1,612.5mm [63.5 in.]



Wheelbase 2,885mm [113.6 in.]



Front wheel track 1,605mm [63.2 in.]



Length 4,838mm [190.1 in.]

Minimum height – mm (inch)

Roof options

Fixed roof	1,887 [74.3]	1,837 [72.3]
Alpine roof	1,882 [74.1]	1,832 [72.1]
With sunroof tilted open	1,920 [75.6]	1,870 [73.6]
Roof rails	1,891 [74.4]	1,841 [72.5]
Integrated phone antenna (Alpine roof)	1,938 [76.3]	1,888 [74.3]

Coil suspension Air suspension (in access lower mode)

1,887 [74.3]	1,837 [72.3]
1,882 [74.1]	1,832 [72.1]
1,920 [75.6]	1,870 [73.6]
1,891 [74.4]	1,841 [72.5]
1,938 [76.3]	1,888 [74.3]

WEIGHTS kg (lbs)

	2.7 TDV6 Manual	2.7 TDV6 Auto	3.0 TDV6 Auto
Base kerb mass* (weight from) (EU)	2,476 [5459]	2,486 [5481]	2,583 [5695]
Gross vehicle weight	3,180 [7011] - coil suspension 3,240 [7,143] - air suspension	3,180 [7011] - coil suspension 3,240 [7,143] - air suspension	3,240 [7143] - air suspension
Maximum mass on each axle (front)	1450 [3197]	1450 [3197]	1450 [3197]
Maximum mass on each axle (rear)	1840 [4057] - coil suspension 1,855 [4,090] - air suspension	1840 [4057] - coil suspension 1,855 [4,090] - air suspension	1855 [4090] - air suspension

Towing

Max towing (towing pack optional)	3,500 [7716]	3,500 [7716]	3,500 [7716]
Unbraked trailer	750 [1653]	750 [1653]	750 [1653]
Maximum mass of vehicle and trailer combination (GTW)	6,680 [14,727] - coil suspension 6,740 [14,859] - air suspension	6,680 [14,727] - coil suspension 6,740 [14,859] - air suspension	6,740 [14,859] - air suspension

*EEC kerb includes fluids, tools, spare and 75kg driver

PERFORMANCE AND FUEL ECONOMY

	2.7 TDV6 Manual	2.7 TDV6 Auto	3.0 TDV6 Auto
Maximum speed mph (km/h)	112 (180)	112 (180)	112 (180)
Acceleration - secs 0-60mph 0-100km/h	11.0 11.7	11.7 12.7	9.0 9.6

Fuel economy

Urban mpg (L/100km)	25.4 (11.1)	21.6 (13.1)	25.2 (11.2)
Extra urban mpg (L/100km)	34.9 (8.1)	33.2 (8.5)	34.0 (8.3)
Combined mpg (L/100km)	30.7 (9.2)	27.7 (10.2)	30.4 (9.3)
Combined CO ₂ emissions (g/km)	244	270	244
Drive by noise/dB	73.0	71.0	72.0 (non DPF) [†] 73.0 (DPF)

[†]DPF refers to Diesel Particulate Filter

Fuel consumption figures: The results given here do not express or imply any guarantee of the fuel consumption of any particular vehicle with which this information may be supplied. Vehicles are not individually tested and there are inevitable differences between individual vehicles of the same model. The vehicle may also incorporate particular modifications. Furthermore, the driver's style and road traffic conditions, as well as the extent to which the vehicle has been driven and the standard of maintenance, will affect its fuel consumption.



landrover.co.uk/ourplanet

Our commitment is to a sustainable future. Everything from the design of our vehicles and the way we build them, to how and where we use them and, at the end of their life, to how they can be safely disposed of, Land Rover is committed to a sustainable future. We're committed to reducing our impact on the environment and are working in four key areas.



e_TERRAIN TECHNOLOGIES.

In 2007 we announced a joint investment into new technologies to improve the environmental performance of our vehicles. This joint investment now stands at £800m. Building on the innovation of the Land_e concept, the first of these technologies is the Stop/Start engine in our diesel manual Freelander 2. In 2008 we revealed our new concept vehicle, the LRX; a Land Rover in body and spirit but conceived as a hybrid 2.0 litre diesel with potential CO₂ emissions of 120g/km.



SUSTAINABLE MANUFACTURING.

World class manufacturing facilities. Certified to ISO14001 since 1998. Our manufacturing facilities at Solihull and Halewood have reduced emissions by around 4 percent year on year, over the last 5 years. Our TDV6 and TDV8 engines are assembled in the Dagenham Diesel Centre which is powered by wind turbines. Total energy used in manufacturing each vehicle has been reduced by 19 percent since 2002. While water use per vehicle has been cut by 14 percent in the same period. We're also offsetting all CO₂ emissions by the manufacturing assembly of Land Rover vehicles at both plants. Partnered with specialist organisation Climate Care, our offset projects include a wind farm in China and hydro electric generators in Tajikistan. In addition, Land Rover vehicles are now designed to be 85 percent recyclable with all current models meeting the European End of Life Vehicles Directive. Sustainable and recyclable materials play an important role too: Freelander 2 contains 10 percent recycled and 10 percent renewable materials.



CO₂ OFFSETTING in 2006, in the UK, we launched a pioneering programme for customers, independently administered by Climate Care, to offset CO₂ emissions for the first 45,000 miles (72,000 km) driven for all new Land Rovers. This programme is being rolled out progressively to other countries; to date in Austria, Belgium, The Netherlands, France, The Middle East, Norway and Sweden. In addition, we're also the first automotive company to offset 100 percent of our manufacturing assembly CO₂ emissions.



GLOBAL CONSERVATION AND HUMANITARIAN PROJECTS.

Land Rover vehicles are used by conservation and humanitarian organisations worldwide and are often first choice for difficult tasks. Organisations include the Born Free Foundation, Biosphere Expeditions, Royal Geographical Society (with IBG), China Exploration and Research Society and Earthwatch Institute. Our projects are diverse, ranging from an initiative to help with the protection of rare wolves in Ethiopia, to a project funded by our CO₂ offset programme which provides efficient cooking stoves to rural parts of Uganda.

Our planet. We take our responsibility to our planet very seriously. Our vehicles are designed for purpose. As part of our Fragile Earth policy Land Rover has actively promoted responsible off-road driving since 1990. Our Experience Centres teach drivers to understand the full potential and unique breadth of capability of their vehicles while reducing impact on nature and the environment, in a wide range of activities.

To find out more, and to see our progress, visit www.landrover.co.uk/ourplanet



www.landrover.co.uk

LAND ROVER FINANCE Land Rover finance offers a wide range of competitive finance and insurance plans, developed exclusively for Land Rover owners and tailored to meet all your individual requirements*. With Land Rover Finance you are dealing with people who have a close working relationship with your local dealership and who are as passionate about Land Rover as you are. Your Land Rover dealership will match your personal or business requirements to the most appropriate finance plan, provide you with quotations and process your application.

WARRANTY Every new Land Rover supplied by Land Rover UK comes with a standard three year unlimited mileage warranty. Please apply to your dealership at the time of purchase for full details of the manufacturer's terms and conditions.

LAND ROVER CONTRACT HIRE is designed to make the Fleet Manager's job easier. Contract Hire is an efficient way of paying for the use of a vehicle without absorbing the costs of ownership and allows your company to make a fixed monthly payment whilst removing assets from the balance sheet. Please contact your Land Rover dealership for more information.

*Finance is subject to status and conditions. Available to over 18's in the UK only.
Guarantees/indemnities may be required. Certain categories of business user may be excluded.

IMPORTANT NOTICE: The colours reproduced here are subject to the limitations of the printing process and may therefore vary slightly from the actual vehicle. The company reserves the right to alter or withdraw any colour finish without notice. Certain specifications are built to customer special order. For delivery availability information, please consult your Land Rover dealership. The colours shown in this booklet cover all the models currently produced by Land Rover. Some of these colours may not be obtainable in your country, please check availability with your Land Rover dealership. This publication is for use in the United Kingdom and whilst Land Rover take the utmost care in ensuring that all the details in the publication are correct at the time of going to press, we are constantly striving for improvement and therefore reserve the right to alter specifications and equipment without notice. Details of specifications and equipment are also subject to change to suit local market conditions and requirements, and not all products are available in every market, some vehicles may be shown with accessories or optional equipment fitted. These products vary from market to market, please consult your Land Rover dealership who will be pleased to advise you on current specifications. Distributors and dealerships are not agents of Land Rover and have absolutely no authority to bind Land Rover to any express or implied undertaking or representation.



Mixed Sources

Product group from well-managed
forests and other controlled sources
www.fsc.org Cert no. SGS-COC-0620
© 1996 Forest Stewardship Council

Please recycle this brochure after use

LAND ROVER Registered Office:
Banbury Road, Gaydon, Warwick CV35 0RR
Registered in England and Wales: Number 4019301
www.landrover.co.uk

© Land Rover 2009. Publication Number: LRML 3014/09



BY APPOINTMENT
TO HM THE QUEEN
MANUFACTURERS OF
LAND ROVER VEHICLES
LAND ROVER, WARWICK



BY APPOINTMENT
TO HRH THE DUKE OF EDINBURGH
MANUFACTURERS OF
LAND ROVER VEHICLES
LAND ROVER, WARWICK



BY APPOINTMENT
TO HRH THE PRINCE OF WALES
MANUFACTURERS OF
LAND ROVER VEHICLES
LAND ROVER, WARWICK



GO BEYOND